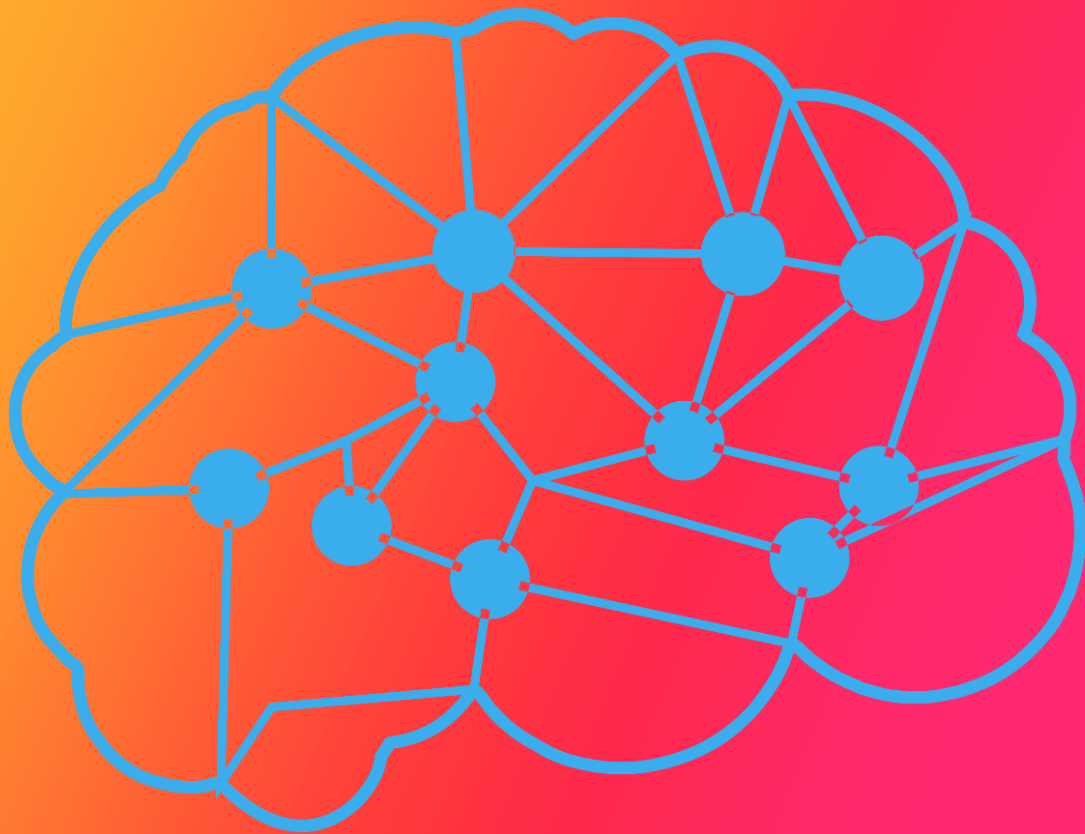


# CHAT-GPT

For Beginners



## Chapter 1: Introduction to CHAT-GPT

- Understanding the basics of CHAT-GPT
- How CHAT-GPT works and its capabilities
- Familiarizing yourself with the interface

## Chapter 2: Setting Up CHAT-GPT

- System requirements and compatibility
- Accessing CHAT-GPT online or installing it locally
- Creating an account and logging in

## Chapter 3: Navigating the CHAT-GPT Interface

- Overview of the main features and sections
- Understanding the chat format and interactions
- Customizing your preferences and settings

## Chapter 4: Interacting with CHAT-GPT

- Initiating conversations and prompts
- Asking questions and getting responses
- Utilizing the context and conversation history

## Chapter 5: Advanced Techniques and Tips

- Formatting and structuring your input for better results
- Handling ambiguous queries and refining your prompts
- Experimenting with different conversation strategies

Recap

## Getting Started with CHAT-GPT

Welcome to Chapter 1 of "Getting Started with CHAT-GPT: A Beginner's Guide to Using the Program." In this chapter, we will lay the foundation by helping you understand the basics of CHAT-GPT. By the end of this chapter, you will have a clear understanding of what CHAT-GPT is and how it functions.

### 1.1 What is CHAT-GPT? <https://chat.openai.com/>

CHAT-GPT is an advanced language model developed by OpenAI. It is based on the GPT-3.5 architecture and is designed to generate human-like text responses to user inputs. CHAT-GPT leverages machine learning techniques and a vast amount of pre-existing text data to provide coherent and context-aware responses.

### 1.2 How Does CHAT-GPT Work?

CHAT-GPT operates using a technique called "unsupervised learning." It is trained on a diverse range of internet text sources, allowing it to learn patterns, grammar, and context from the data. The model learns to generate responses by predicting the most probable next word given the input it has received. This process enables CHAT-GPT to generate text that appears to be written by a human.

### 1.3 Limitations of CHAT-GPT:

While CHAT-GPT is a remarkable language model, it's essential to be aware of its limitations:

a) Lack of factual accuracy: CHAT-GPT does not possess real-time knowledge and relies solely on the information it has learned from pre-existing text. Therefore, it may generate responses that are not entirely accurate or up to date.

b) Sensitivity to input phrasing: The same prompt, rephrased slightly, may yield different responses from CHAT-GPT. It's crucial to experiment with phrasing and iterate on prompts to obtain desired results.

c) Potential biases: CHAT-GPT may inadvertently exhibit biases present in the training data. It's important to critically evaluate and verify the information generated by the model.

#### 1.4 Context and Conversation History:

CHAT-GPT operates in a chat-based format, which means it takes into account the context and conversation history when generating responses. It considers the preceding messages as well as the current input to provide coherent and relevant replies. You can use this feature to maintain an ongoing conversation with CHAT-GPT.

#### 1.5 Ethical Usage of CHAT-GPT:

When using CHAT-GPT, it's crucial to keep ethical considerations in mind. Avoid using the model to generate harmful or malicious content, spread misinformation, or engage in unethical activities. Respect user privacy and refrain from sharing sensitive information during interactions.

In this chapter, we explored the basics of CHAT-GPT. We discussed its purpose, the underlying working mechanism, limitations, and the importance of context and conversation history. By understanding these fundamentals, you are now equipped with the knowledge needed to proceed further in utilizing CHAT-GPT effectively. In the next chapter, we will guide you through the setup process, ensuring you have the necessary tools to begin your journey with CHAT-GPT.

### **How CHAT-GPT Works and Its Capabilities**

In Chapter 2 of "Getting Started with CHAT-GPT: A Beginner's Guide to Using the Program," we delve deeper into the inner workings of CHAT-GPT. Understanding how the model functions and its capabilities will enable you to make the most out of your interactions. By the end of this chapter, you will clearly understand the mechanisms behind CHAT-GPT and the range of tasks it can handle.

#### 2.1 Transformer Architecture:

CHAT-GPT is built upon a powerful deep-learning model known as the Transformer architecture. This architecture revolutionized natural language processing tasks by leveraging attention mechanisms. Attention allows the model to focus on different parts of the input sequence, capturing dependencies and context more effectively.

## 2.2 Language Generation:

CHAT-GPT is primarily used for language generation tasks. It excels at generating coherent and context-aware text based on the given input. By leveraging its training on massive amounts of text data, CHAT-GPT can produce human-like responses to a wide range of prompts.

## 2.3 Creative Writing and Storytelling:

One of CHAT-GPT's notable capabilities is its ability to engage in creative writing and storytelling. You can provide CHAT-GPT with a prompt, such as the beginning of a story or a specific scenario, and it will continue the narrative in a compelling and imaginative manner.

## 2.4 Question Answering:

CHAT-GPT can also assist with answering questions. By phrasing your query appropriately and providing the necessary context, you can obtain informative responses from the model. However, it's important to note that the accuracy and factual correctness of these answers depend on the information CHAT-GPT has been exposed to during its training.

## 2.5 Language Translation and Summarization:

Another remarkable capability of CHAT-GPT is language translation and summarization. While it may not be as robust as specialized translation or summarization models, CHAT-GPT can provide rudimentary translations or summaries based on the provided input.

## 2.6 Coding Assistance:

CHAT-GPT can be a helpful companion when it comes to coding. You can ask it questions or seek suggestions related to programming languages and coding problems. Although it is not a substitute for dedicated coding tools, CHAT-GPT's assistance can be valuable for brainstorming ideas or getting unstuck.

## 2.7 Additional Applications:

Beyond the aforementioned capabilities, CHAT-GPT can be utilized for a range of other tasks, including content generation, brainstorming ideas, providing explanations, and more. Its versatility makes it a powerful tool for various language-related endeavors.

In this chapter, we explored how CHAT-GPT works and the wide range of tasks it is capable of handling. By harnessing its language generation abilities, CHAT-GPT can assist with creative writing, question answering, translation, coding assistance, and much more. Understanding these capabilities will enable you to leverage CHAT-GPT effectively and explore its potential applications in different domains. In the next chapter, we will guide you through the setup process, ensuring you have the necessary tools to begin your journey with CHAT-GPT.

### **Navigating the CHAT-GPT Interface**

Welcome to Chapter 3 of "Getting Started with CHAT-GPT: A Beginner's Guide to Using the Program." In this chapter, we will walk you through the CHAT-GPT interface and help you become familiar with its various features and sections. Understanding the interface will empower you to navigate CHAT-GPT effectively and make the most out of your interactions.

#### 3.1 Overview of the Main Features:

The CHAT-GPT interface typically consists of the following key elements:

- **Input Box:** This is where you enter your prompts or messages to initiate a conversation with CHAT-GPT.
- **Response Box:** This displays the generated response from CHAT-GPT. It appears below the input box.
- **Conversation History:** The conversation history section allows you to view the ongoing chat or the previous interactions with CHAT-GPT.
- **User and Assistant Labels:** In a multi-user setting, the interface may display user and assistant labels to differentiate between user inputs and model-generated responses.

#### 3.2 Initiating Conversations:

To start a conversation, simply enter your prompt or message in the input box. You can begin with a greeting or specific instructions for CHAT-GPT, depending on the desired outcome. Pressing the enter key or clicking the "Send" button will submit your input for processing.

### 3.3 Understanding Response Generation:

After submitting your input, CHAT-GPT will generate a response that appears in the response box. The response is context-aware and aims to provide a relevant and coherent reply based on the conversation history and the prompt you provided. Take some time to read and understand the generated response before proceeding with the conversation.

### 3.4 Customizing Preferences and Settings:

The CHAT-GPT interface may offer customization options and settings that enhance your experience. You might have the ability to adjust parameters such as response length, temperature (controlling randomness), and more. Explore these settings to tailor CHAT-GPT's behavior to your liking and specific requirements.

### 3.5 Interacting with the Conversation History:

The conversation history section allows you to review previous messages and responses, giving you context for ongoing conversations. You can refer back to earlier interactions to maintain continuity or revisit specific information. Some interfaces may provide options to edit or delete previous messages for better control over the conversation flow.

### 3.6 Experimenting and Iterating:

Don't be afraid to experiment with different prompts, phrasing, or strategies to achieve the desired results. CHAT-GPT's responses can vary based on how you frame your input. If you encounter suboptimal or unexpected responses, iterate and refine your prompts to guide CHAT-GPT towards generating more suitable replies.

In this chapter, we explored the CHAT-GPT interface and its various features. Understanding how to navigate the interface, initiate conversations, interpret generated responses, and utilize the

conversation history section will help you engage effectively with CHAT-GPT. Remember to customize preferences and experiment with different approaches to refine your interactions. In the next chapter, we will guide you through the setup process, ensuring you have the necessary tools to begin your journey with CHAT-GPT.

## **Setting Up CHAT-GPT**

In Chapter 4 of "Getting Started with CHAT-GPT: A Beginner's Guide to Using the Program," we will walk you through the process of setting up CHAT-GPT. This chapter covers the system requirements and compatibility, accessing CHAT-GPT online, installing it locally, and creating an account to get started. By the end of this chapter, you will be equipped with the necessary knowledge to set up CHAT-GPT and begin your journey with the program.

### 4.1 System Requirements and Compatibility:

Before setting up CHAT-GPT, it's essential to ensure your system meets the necessary requirements. While specific requirements may vary based on the implementation or platform, here are some general considerations:

- **Hardware:** CHAT-GPT requires a computer with a modern processor and sufficient memory (RAM) to handle the computational demands.
- **Operating System:** CHAT-GPT is compatible with various operating systems, including Windows, macOS, and Linux. Check the specific documentation or platform requirements for compatibility details.

### 4.2 Accessing CHAT-GPT Online:

One of the simplest ways to use CHAT-GPT is by accessing it online through platforms that provide CHAT-GPT as a service. Here's a general process to get started:

- Open your preferred web browser and navigate to the CHAT-GPT service provider's website.
- If required, sign up for an account or log in with your existing credentials.
- Once logged in, you will typically be presented with an interface where you can enter prompts and interact with CHAT-GPT directly.

### 4.3 Installing CHAT-GPT Locally:



If you prefer to have more control over your CHAT-GPT setup or need to use it in an offline environment, you can choose to install CHAT-GPT locally on your machine. Here's a high-level overview of the installation process:

- Check the official documentation or the platform you're using for specific installation instructions.
- Download the appropriate CHAT-GPT package or repository based on your operating system and architecture.
- Follow the installation instructions provided, which usually involve running commands or scripts to set up the necessary dependencies and environment.
- Once the installation is complete, you can access CHAT-GPT through the command line or a local interface provided by the installed package.

#### 4.4 Creating an Account and Logging In:

Some CHAT-GPT platforms may require you to create an account to access their services. Here's a general guide on creating an account and logging in:

- Visit the CHAT-GPT service provider's website.
- Look for a "Sign Up" or "Create Account" option and click on it.
- Follow the registration process, which typically involves providing your email address, choosing a username and password, and agreeing to the terms of service.
- Once you've created your account, log in using your credentials.
- Depending on the platform, you may need to verify your email address before gaining full access to CHAT-GPT.

In this chapter, we covered the crucial steps involved in setting up CHAT-GPT. We discussed the system requirements and compatibility considerations, as well as the options for accessing CHAT-GPT online or installing it locally. Additionally, we explored the process of creating an account and logging in to the CHAT-GPT service. Now that you have set up CHAT-GPT, you are ready to move forward and explore its capabilities. In the next chapter, we will delve into the details of interacting with CHAT-GPT effectively, ensuring you make the most out of your conversations.

### **Navigating the CHAT-GPT Interface**

Welcome to Chapter 5 of "Getting Started with CHAT-GPT: A Beginner's Guide to Using the Program." In this chapter, we will explore how to navigate the CHAT-GPT interface effectively. Understanding

how to initiate conversations, craft prompts, ask questions, utilize context, and leverage conversation history will help you maximize your interactions with CHAT-GPT. Let's dive in!

### 5.1 Initiating Conversations and Prompts:

To start a conversation with CHAT-GPT, you need to provide an initial prompt. Here are some tips for effectively initiating conversations:

- **Begin with a greeting:** Start your conversation with a friendly greeting to establish a conversational tone.
- **Be specific:** Clearly state your intentions or ask CHAT-GPT to perform a specific task to guide the conversation in the desired direction.
- **Experiment with prompts:** Try different prompts and observe how CHAT-GPT responds. Small changes in phrasing or approach can lead to varied outcomes.

### 5.2 Asking Questions and Getting Responses:

CHAT-GPT can provide responses to questions, but it's important to keep a few considerations in mind:

- **Ask specific questions:** Provide context and be as specific as possible when asking questions to obtain more accurate and relevant responses.
- **Format questions clearly:** Ensure that your questions are clear and well-structured to avoid any ambiguity that might lead to unexpected or unhelpful answers.
- **Iterate and rephrase:** If you receive an unsatisfactory response, try rephrasing or refining your question to guide CHAT-GPT towards a better answer.

### 5.3 Utilizing Context and Conversation History:

CHAT-GPT operates in a chat-based format, which means it considers the conversation history and context to generate responses. Here's how you can make the most of context and conversation history:

- **Reference previous messages:** If you want CHAT-GPT to consider specific information from earlier in the conversation, refer to it explicitly.
- **Maintain context:** Continuously provide necessary context in your prompts to ensure CHAT-GPT understands the direction of the conversation.

- Monitor the conversation flow: Pay attention to the generated responses and ensure they align with the desired direction of the conversation. If needed, course-correct by providing additional context or rephrasing your prompts.

#### 5.4 Experimenting with Different Strategies:

Don't be afraid to experiment and iterate on your approach when interacting with CHAT-GPT:

- Try different conversation strategies: Explore different conversation styles, such as asking CHAT-GPT to think step-by-step or debate pros and cons before giving an answer.
- Adjusting response length: You can experiment with adjusting the desired response length to obtain more concise or detailed answers, depending on your needs.
- Controlling randomness: Some platforms offer a temperature parameter that influences the randomness of the responses. Experiment with different temperature values to achieve the desired balance between creativity and coherence.

In this chapter, we explored the various aspects of navigating the CHAT-GPT interface. We discussed initiating conversations and crafting effective prompts, asking questions and receiving responses, and utilizing the context and conversation history. By understanding these aspects and experimenting with different strategies, you can enhance your interactions with CHAT-GPT and achieve more accurate and meaningful results. In the next chapter, we will delve into advanced techniques and tips to further optimize your experience with CHAT-GPT.

### **Advanced Techniques and Tips**

Welcome to Chapter 6 of "Getting Started with CHAT-GPT: A Beginner's Guide to Using the Program." In this chapter, we will explore advanced techniques and tips to further optimize your interactions with CHAT-GPT. By learning how to format and structure your input effectively, handle ambiguous queries, refine your prompts, and experiment with different conversation strategies, you can enhance the quality and relevance of the generated responses. Let's dive in!

#### 6.1 Formatting and Structuring Your Input:

How you format and structure your input can significantly impact the quality of responses from CHAT-GPT. Here are some techniques to consider:

- Use line breaks: Break your input into smaller, logical chunks by incorporating line breaks. This helps CHAT-GPT understand the structure and context of your message.
- Utilize bullet points or numbering: If you have multiple questions or points to address, consider using bullet points or numbering to make it easier for CHAT-GPT to identify and respond to each item separately.
- Add context and cues: Include relevant context and cues in your prompts to guide CHAT-GPT towards the desired response. You can reference previous messages, provide specific examples, or specify the format you expect in the answer.

## 6.2 Handling Ambiguous Queries and Refining Prompts:

Sometimes, your queries may be ambiguous or lead to unintended responses. Here's how to handle such situations and refine your prompts:

- Specify your intent: If your query can be interpreted in multiple ways, clarify your intent in the prompt to avoid confusion. Provide additional context or ask CHAT-GPT to consider specific factors that will help it generate the desired response.
- Rephrase or refine: If you receive an unexpected or unsatisfactory response, try rephrasing or refining your question. Experiment with different wording or approach to guide CHAT-GPT towards a more accurate answer.

## 6.3 Experimenting with Different Conversation Strategies:

Exploring different conversation strategies can lead to more engaging and informative interactions with CHAT-GPT. Here are a few techniques to experiment with:

- Role-playing: Assume a specific role or persona while conversing with CHAT-GPT to elicit responses that align with that role. For example, pretend to be a historical figure, a character from a book, or an expert in a particular field.
- Debating pros and cons: Ask CHAT-GPT to think step-by-step or debate pros and cons before providing a final answer. This can yield more thoughtful and well-considered responses.
- Providing feedback and guidance: If you receive an answer that is not quite what you expected, offer constructive feedback to CHAT-GPT. For example, you can ask it to think more critically or provide a rationale behind its response. This iterative process can help refine the quality of the generated responses over time.

## 6.4 Monitoring and Iterating:

As you interact with CHAT-GPT, it's crucial to monitor the conversation flow and iterate as needed.

Here's how:

- **Observe response quality:** Pay attention to the generated responses and assess their accuracy and relevance to your queries. If necessary, adjust your prompts or strategies accordingly.
- **Iterate on prompts and phrasing:** If you notice patterns of suboptimal responses, experiment with different prompts, question structures, or wording to guide CHAT-GPT towards more desirable answers.

In this chapter, we explored advanced techniques and tips to enhance your interactions with CHAT-GPT. We discussed formatting and structuring your input, handling ambiguous queries, refining prompts, and experimenting with different conversation strategies. By implementing these techniques, you can optimize the quality and relevance of the generated responses and have more engaging and productive conversations with CHAT-GPT.

### **Recap**

Congratulations! You have reached the end of "CHAT-GPT for Beginners: A Comprehensive Guide to Getting Started." Throughout this ebook, we have covered key concepts and techniques to help you effectively utilize CHAT-GPT and have meaningful interactions. Let's recap what we've learned and encourage you to continue exploring and experimenting with CHAT-GPT.

In Chapter 1, we introduced CHAT-GPT and its capabilities, highlighting its potential to generate context-aware responses based on prompts and conversation history. We discussed the importance of understanding the limitations of the model and being mindful of ethical considerations when using AI technologies.

Chapter 2 guided you through the process of familiarizing yourself with the CHAT-GPT interface. We covered the main features, including the input box, response box, and conversation history. By understanding the interface, you can navigate CHAT-GPT effectively and make the most out of your conversations.

In Chapter 3, we explored how CHAT-GPT works and its capabilities. We discussed the underlying mechanisms of the model and its ability to generate coherent responses based on the provided prompts and context. Understanding these fundamentals enables you to leverage CHAT-GPT more effectively.

Chapter 4 focused on setting up CHAT-GPT. We covered system requirements and compatibility, accessing CHAT-GPT online, and installing it locally. We also discussed creating an account and logging in, ensuring you have the necessary tools to begin your journey with CHAT-GPT.

Chapter 5 delved into navigating the CHAT-GPT interface. We explored initiating conversations and crafting prompts, asking questions and receiving responses, and utilizing context and conversation history. By mastering these navigation techniques, you can have more productive and engaging interactions with CHAT-GPT.

In Chapter 6, we discussed advanced techniques and tips to further optimize your experience with CHAT-GPT. We explored formatting and structuring your input, handling ambiguous queries, refining prompts, and experimenting with different conversation strategies. These techniques empower you to obtain more accurate and relevant responses.

Now that you have a solid foundation in using CHAT-GPT, we encourage you to continue exploring and experimenting. Every interaction is an opportunity to refine your prompts, adjust your strategies, and discover new ways to leverage CHAT-GPT's capabilities. Embrace curiosity and creativity as you interact with the model.

Remember, AI models like CHAT-GPT are constantly evolving, and there is always room for improvement. Stay up to date with the latest advancements and developments in the field of natural language processing. Engage with the AI community, participate in forums, and explore research papers to deepen your understanding and learn from others' experiences.

For further learning, here are some additional resources and references:

- OpenAI's website: Visit the OpenAI website for official documentation, blog posts, and updates on CHAT-GPT and related projects.
- Research papers: Explore academic papers on natural language processing, machine learning, and AI to gain insights into the advancements in the field.
- Online forums and communities: Engage with the AI community on platforms such as Reddit, Stack Exchange, and Discord to share ideas, ask questions, and learn from fellow enthusiasts.

Remember, the more you engage and practice with CHAT-GPT, the better you'll become at harnessing its power. Embrace the learning journey, experiment with different approaches, and enjoy the incredible possibilities that CHAT-GPT offers.

Wishing you all the best in your adventures with CHAT-GPT!